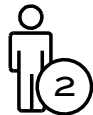


MOSS PROVIDES:

- Wrench
- Gloves
- Wash Cloth
- Plastic Drop Cloth



GENERAL INSTRUCTIONS:

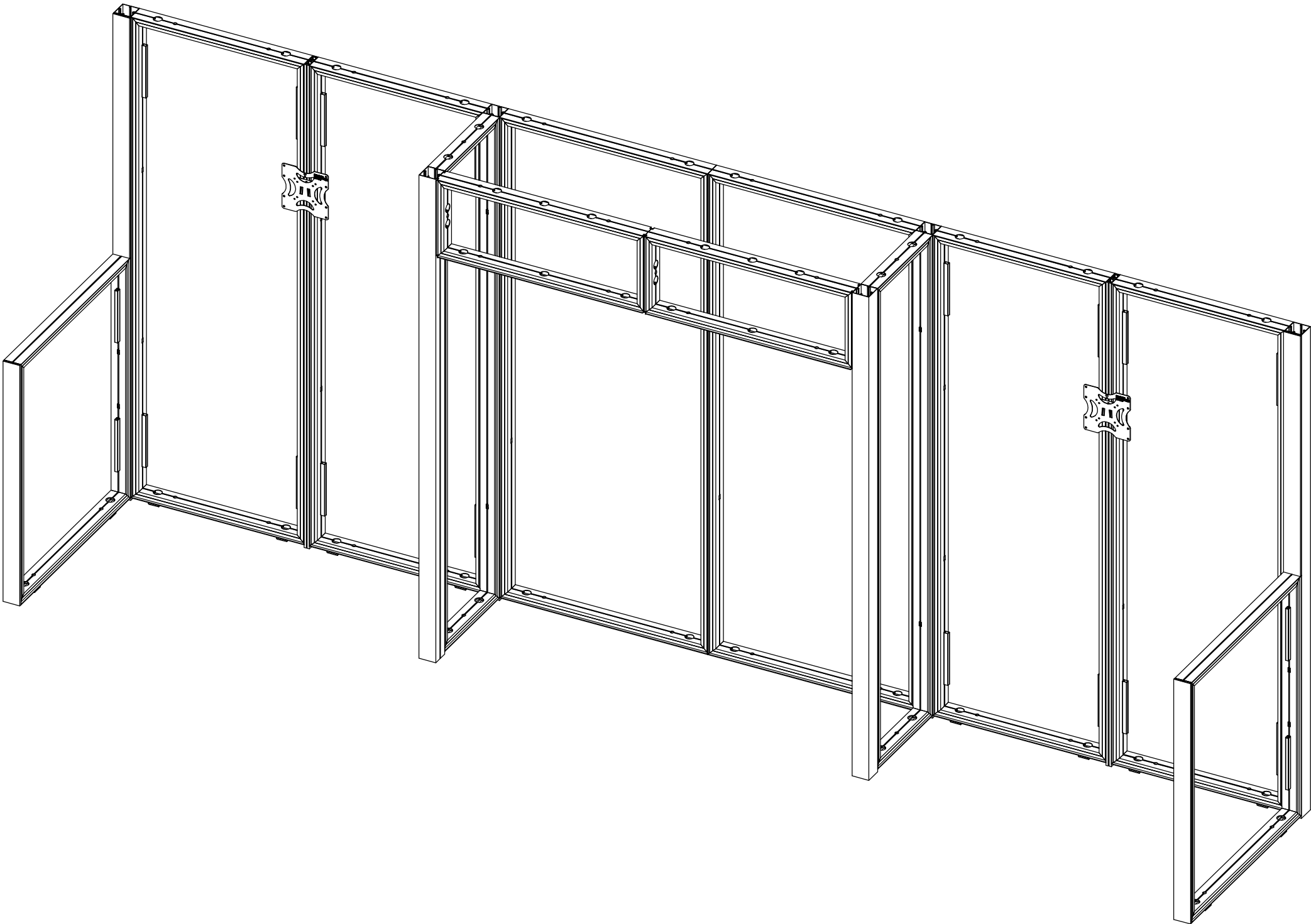
- Wipe down all extrusion, clean work area and lay out plastic sheeting.
- Repack fabric neatly in the bag provided.

WARNING:

Hanging system and structure are designed for:
(1) indoor use only and (2) to hold the weight of the structure and fabric cover only. No other loads should be applied to this display system.

By signing the order acknowledgment or sending a confirmed purchase order, you are agreeing to the Moss Terms & Conditions found on our website here:

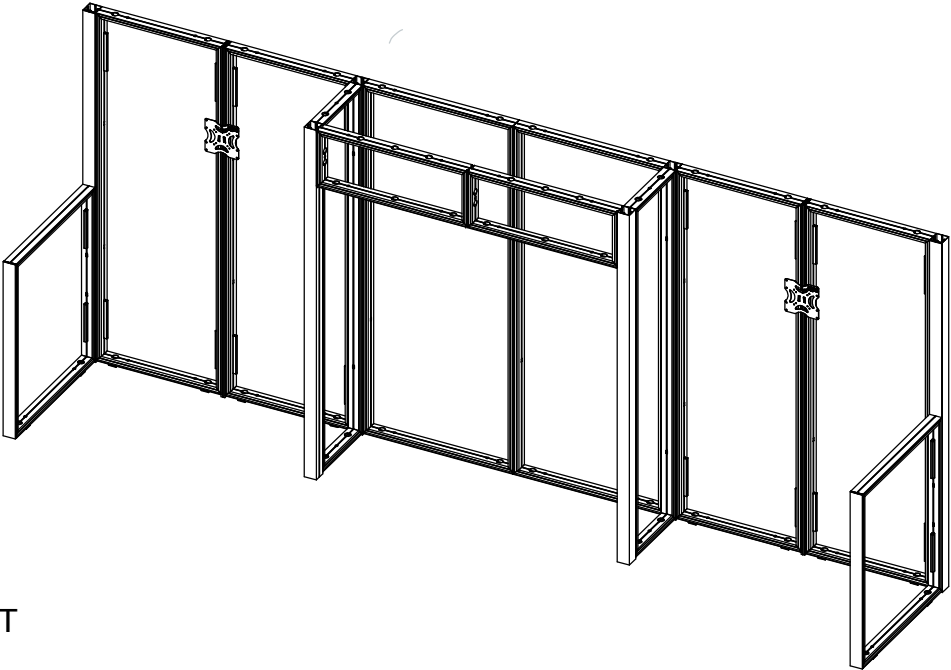
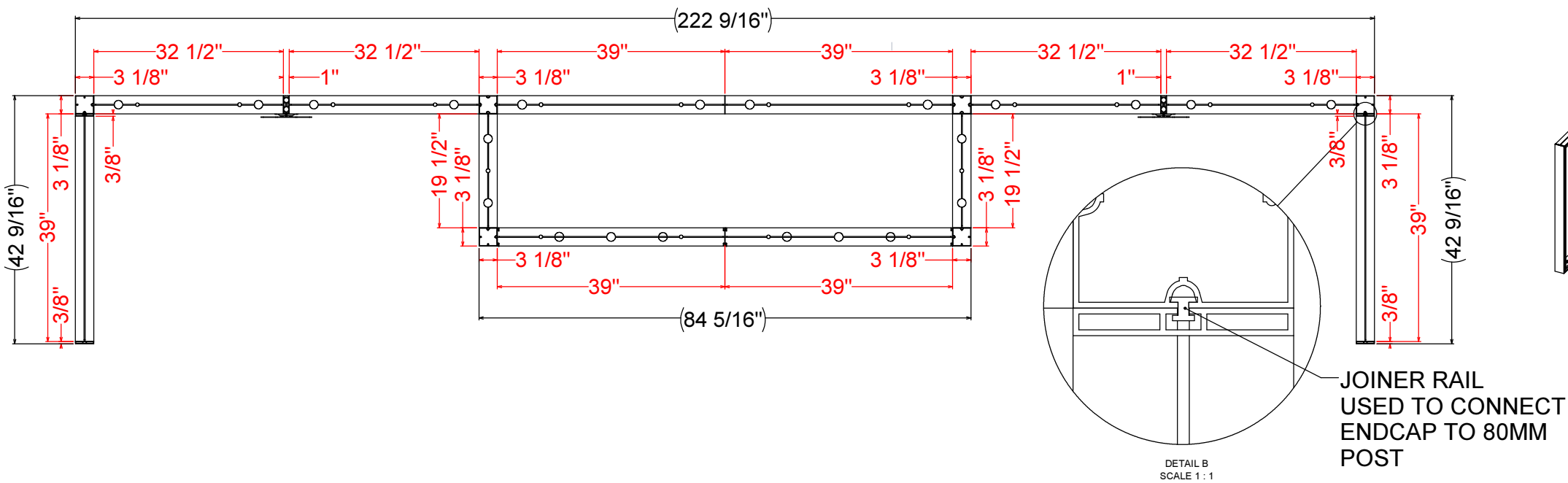
www.mossinc.com/terms-and-conditions



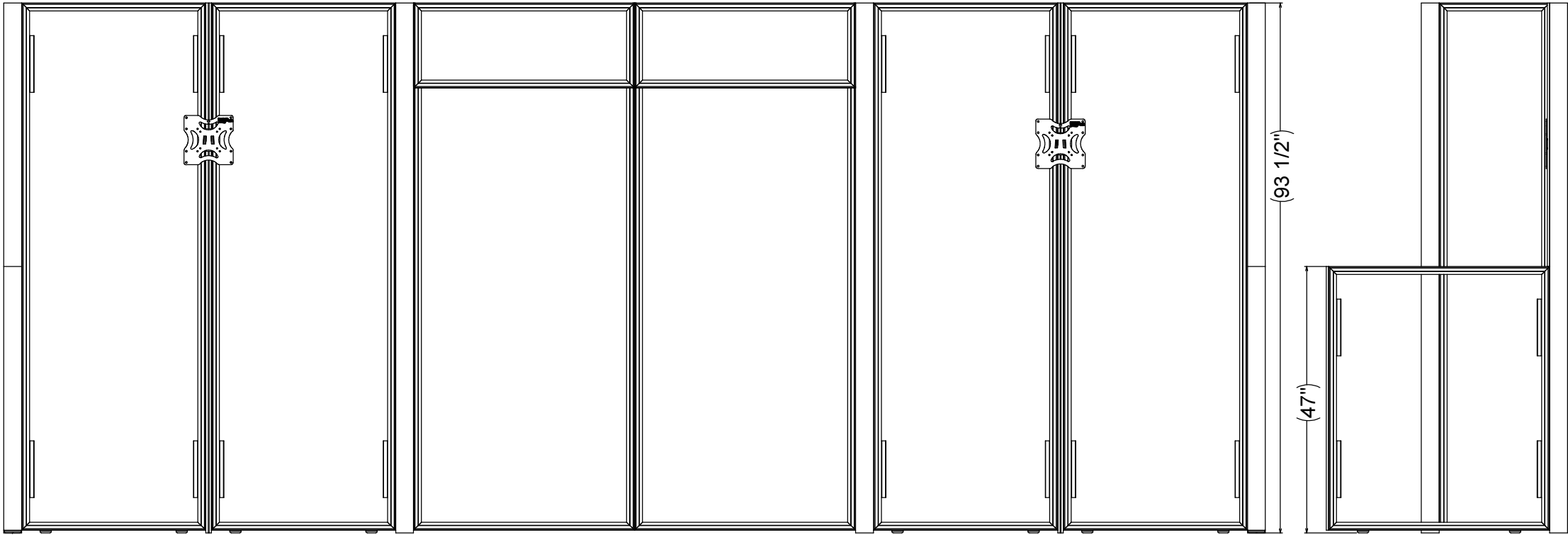
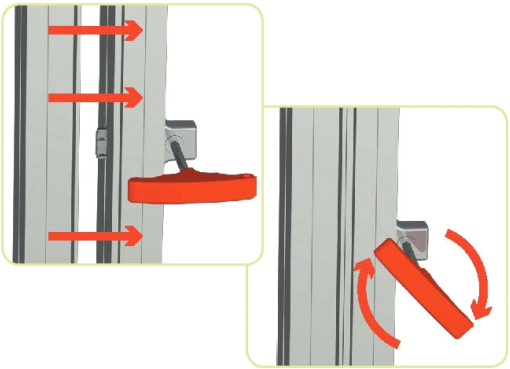
CLIENT: -	PROJECT MANAGER: -	DESIGNER: -	W.O.#: -
PROJECT: EZ WALL CONFIGURATIONS	W.O.DESCRPTION: THE HEADLINER	CURRENT REVISION: 0	LINE ITEM #: -

MOSSINC.COM
CONTACT US: (800) 341-1557
AFTER HOURS: (877) 214-2986

DIMENSIONS



HOW TO JOIN WALLS TOGETHER



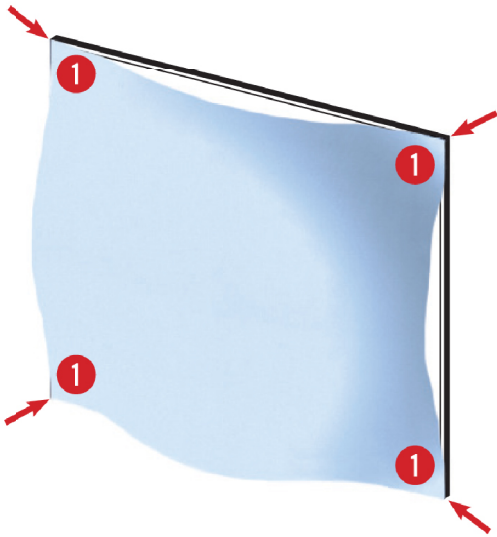
P/N	BOM Description	QTY.
N/A	EZ WALL FABRICS	14
4008116_46	46.5 END CAP	4
4008109	32.5 X 93 WELDED EZ WALL	4
4009508	93.5 SMOOTH CORNER COLUMN	4
4008110	39 X 46.5 WELDED EZ WALL	2
4008221	93.5 4-WAY CORNER COLUMN	2
4008107	39 X 93 WELDED EZ WALL	2
4008108	19.5 X 93 WELDED EZ WALL	2
4008114	93.5 LOW PROFILE ACCESSORY COLUMN	2
4005162	MONITOR MOUNT BRACKET	2
4008432_45	45in. JOINER RAIL	2
4107902	15x39 EZ WALL II - WELDED	2

CLIENT: -	PROJECT MANAGER: -	DESIGNER: -	W.O.#: -
PROJECT: EZ WALL CONFIGURATIONS	W.O.DESRIPTION: THE HEADLINER	CURRENT REVISION: 0	LINE ITEM #: -

STEP 3

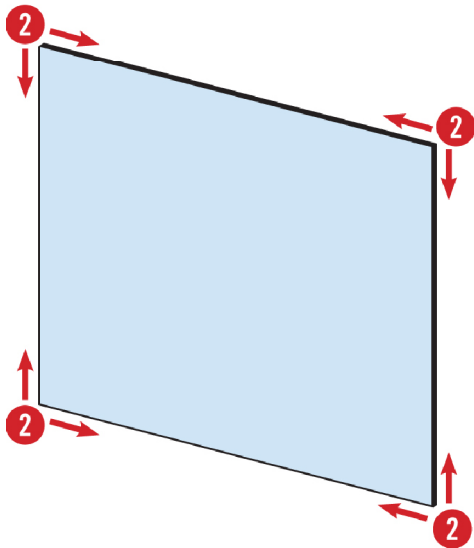
SEG FABRIC GRAPHICS INSTALLATION

1 Insert the gasket into only the corners of the frame.



2 **CRITICAL:** Start from each corner and work towards the center of the frame to evenly distribute the gasket in the frame channel.

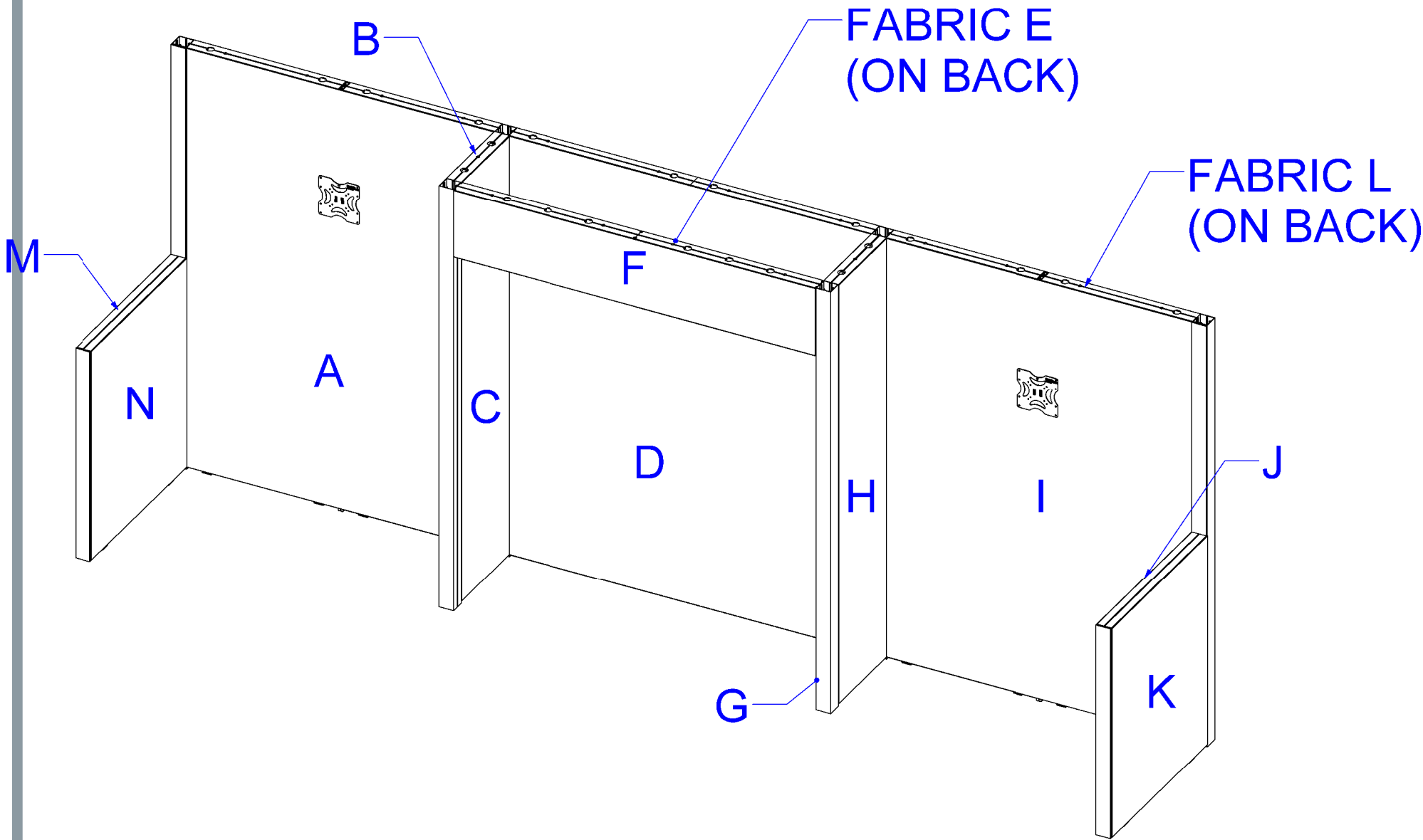
DO NOT start at one corner and work in one direction across the frame as this will stretch the gasket and bunch the fabric.



FABRIC HANDLING

- | Most fabrics can be folded. Loosely fold with image facing inward.
- | Follow general fabric care guidelines included with this shipment.
- | Store graphics in original shipping packaging.
- | Do not crush.

Wipe down frame. Lay down supplied plastic drop cloth. Put on supplied gloves. Carefully unpack fabric covers and lay face down on clean plastic drop cloth. Locate the fabric(s) and verify orientation. See fabric installation details to the left for best fit. If needed, hand steam to remove small wrinkles or creases.



GLOVES



CLIENT: -	PROJECT MANAGER: -	DESIGNER: -	W.O.#: -
PROJECT: EZ WALL CONFIGURATIONS	W.O.DESCRPTION: THE HEADLINER	CURRENT REVISION: O	LINE ITEM #: -