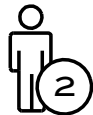


MOSS PROVIDES:

- Wrench
- Gloves
- Wash Cloth
- Plastic Drop Cloth



GENERAL INSTRUCTIONS:

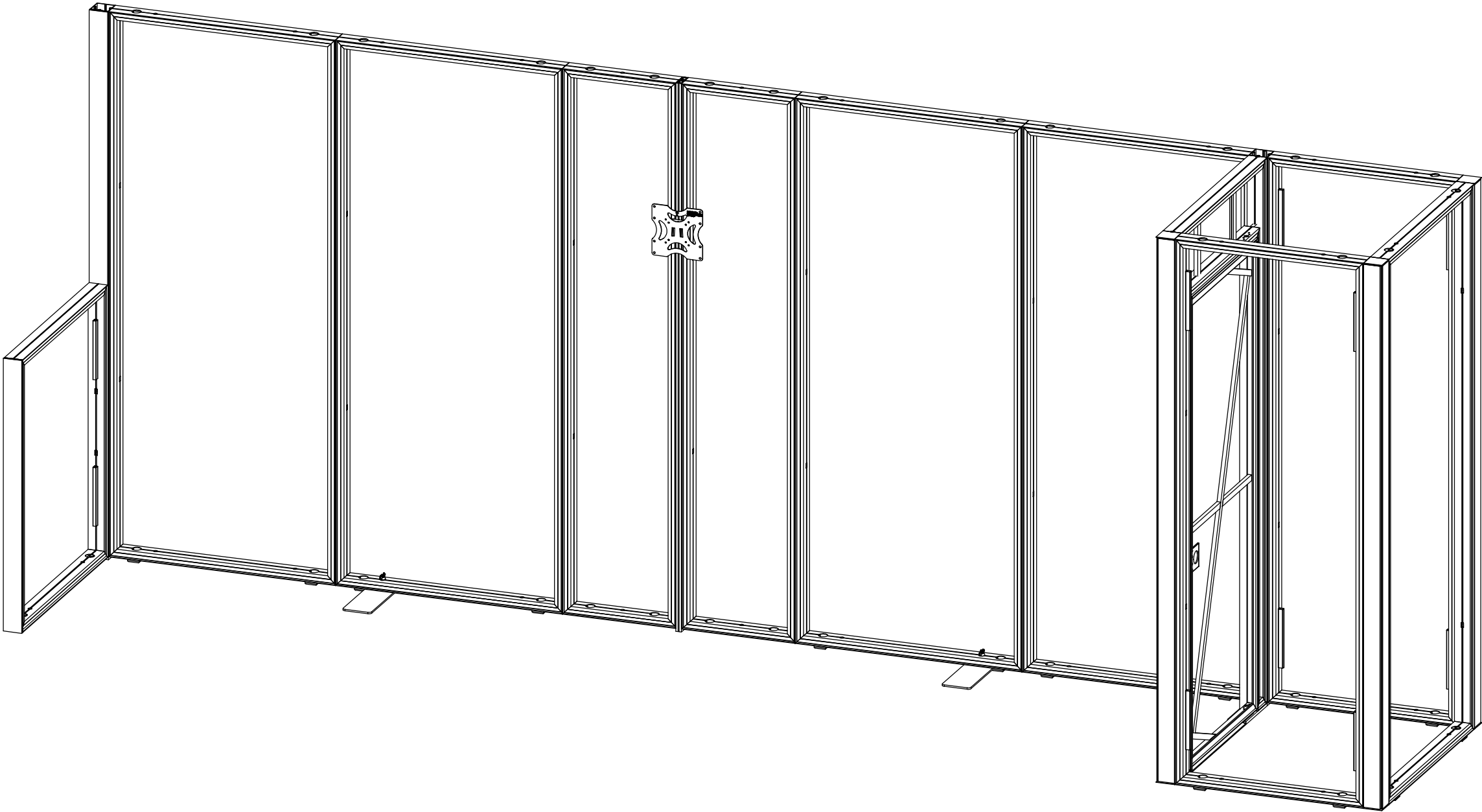
- Wipe down all extrusion, clean work area and lay out plastic sheeting.
- Repack fabric neatly in the bag provided.

WARNING:

Hanging system and structure are designed for:  
(1) indoor use only and (2) to hold the weight of the structure and fabric cover only. No other loads should be applied to this display system.

By signing the order acknowledgment or sending a confirmed purchase order, you are agreeing to the Moss Terms & Conditions found on our website here:

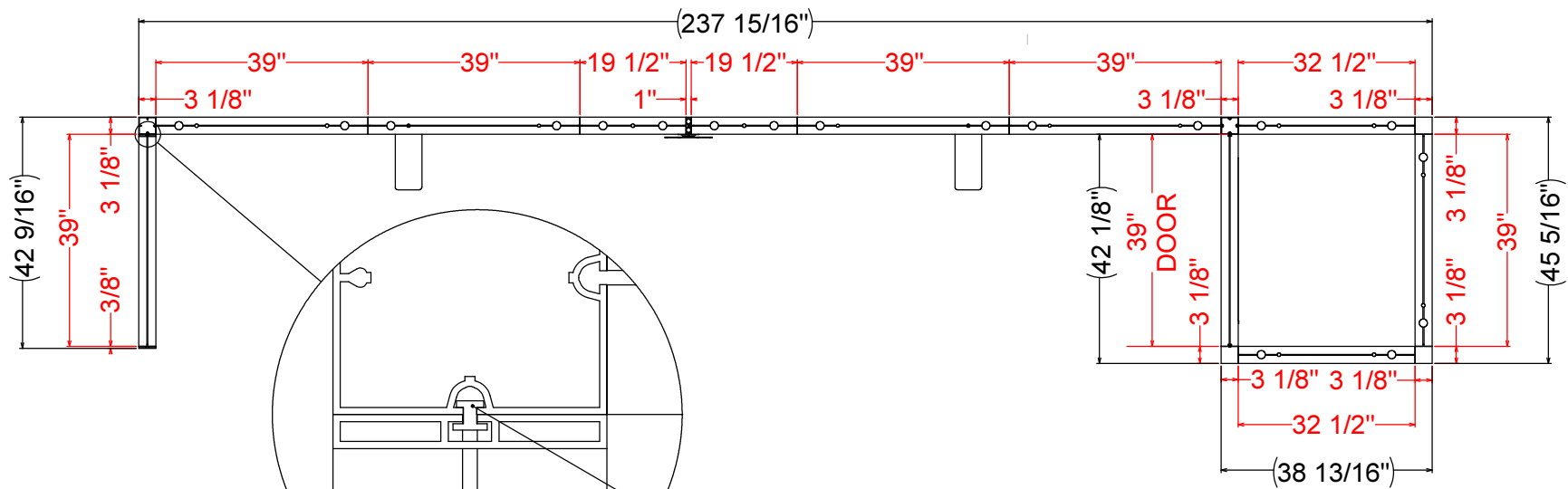
[www.mossinc.com/terms-and-conditions](http://www.mossinc.com/terms-and-conditions)



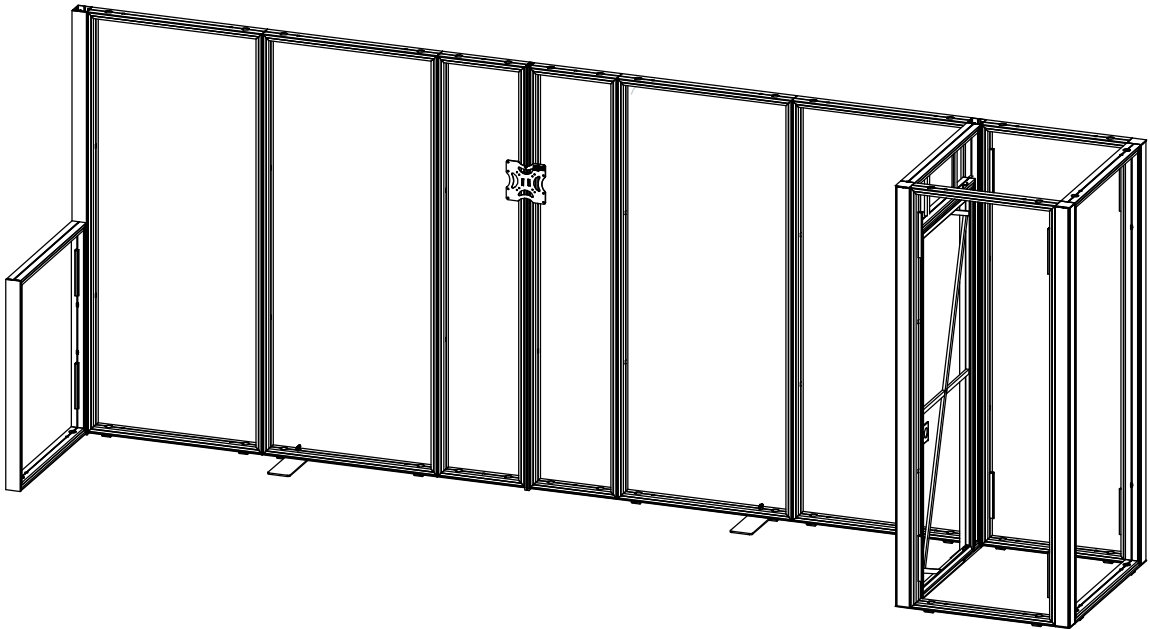
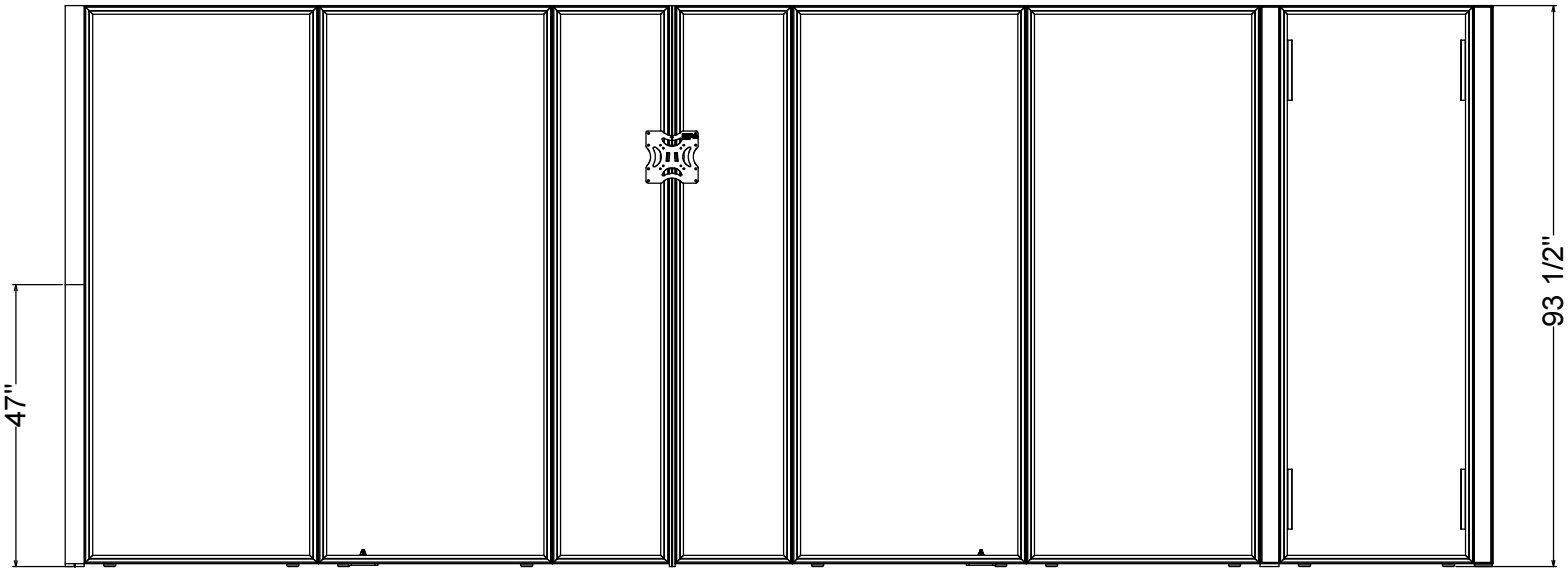
CLIENT: -	PROJECT MANAGER: -	DESIGNER: -	W.O.#: -
PROJECT: EZ WALL CONFIGURATIONS	W.O.DESCRPTION: SIMPLY ENGAGING	CURRENT REVISION: 0	LINE ITEM #: -

MOSSINC.COM  
CONTACT US: (800) 341-1557  
AFTER HOURS: (877) 214-2986

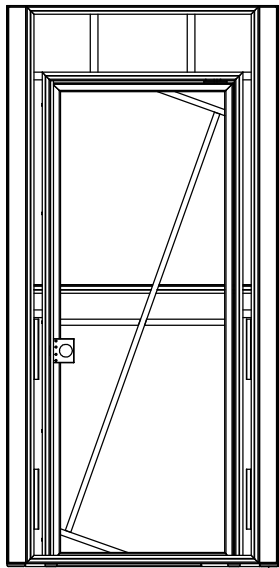
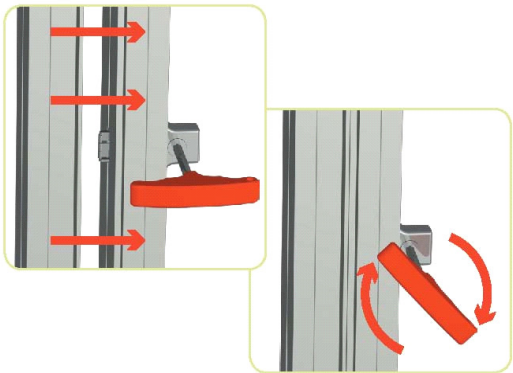
DIMENSIONS



JOINER RAIL  
USED TO CONNECT  
ENDCAP TO 80MM  
POST



HOW TO JOIN WALLS TOGETHER



P/N	BOM Description	QTY.
N/A	EZ WALL FABRICS	8
4008107	39 X 93 WELDED EZ WALL	5
4009507	93.5 HIDDEN CORNER POST	3
4008109	32.5 X 93 WELDED EZ WALL	2
4008116_46	46.5 END CAP	2
4008108	19.5 X 93 WELDED EZ WALL	2
4008126	340mm X 125mm BASEPLATE	2
4008432	90in. JOINER RAIL	2
N/A	WINGNUT	2
4009526	EZ WALL ATTACHMENT STUD	2
4009508	93.5 SMOOTH CORNER COLUMN	1
4008221	93.5 4-WAY CORNER COLUMN	1
4008096	RH FULL GRAPHIC DOOR	1
4008110	39 X 46.5 WELDED EZ WALL	1
4008114	93.5 LOW PROFILE ACCESSORY COLUMN	1
4005162	MONITOR MOUNT BRACKET	1
4008432_45	45in. JOINER RAIL	1

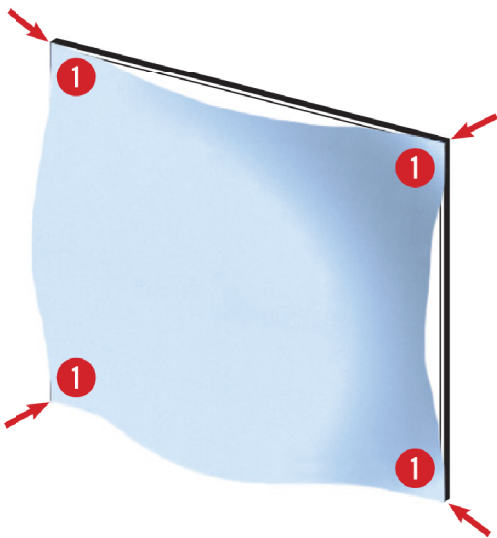
CLIENT: -	PROJECT MANAGER: -	DESIGNER: -	W.O.#: -
PROJECT: EZ WALL CONFIGURATIONS	W.O.DESRIPTION: SIMPLY ENGAGING	CURRENT REVISION: 0	LINE ITEM #: -

MOSSINC.COM  
CONTACT US: (800) 341-1557  
AFTER HOURS: (877) 214-2986

STEP 3

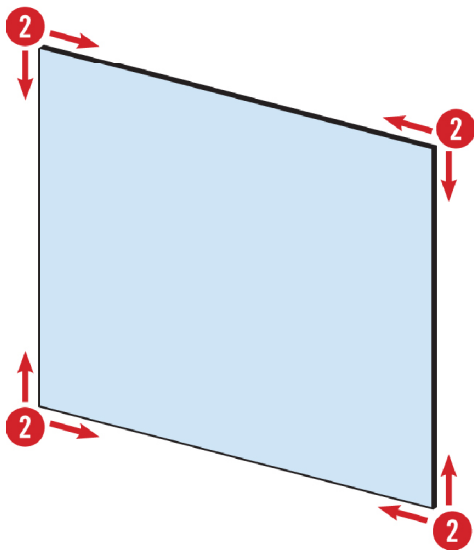
SEG FABRIC GRAPHICS INSTALLATION

1 Insert the gasket into only the corners of the frame.



2 **CRITICAL:** Start from each corner and work towards the center of the frame to evenly distribute the gasket in the frame channel.

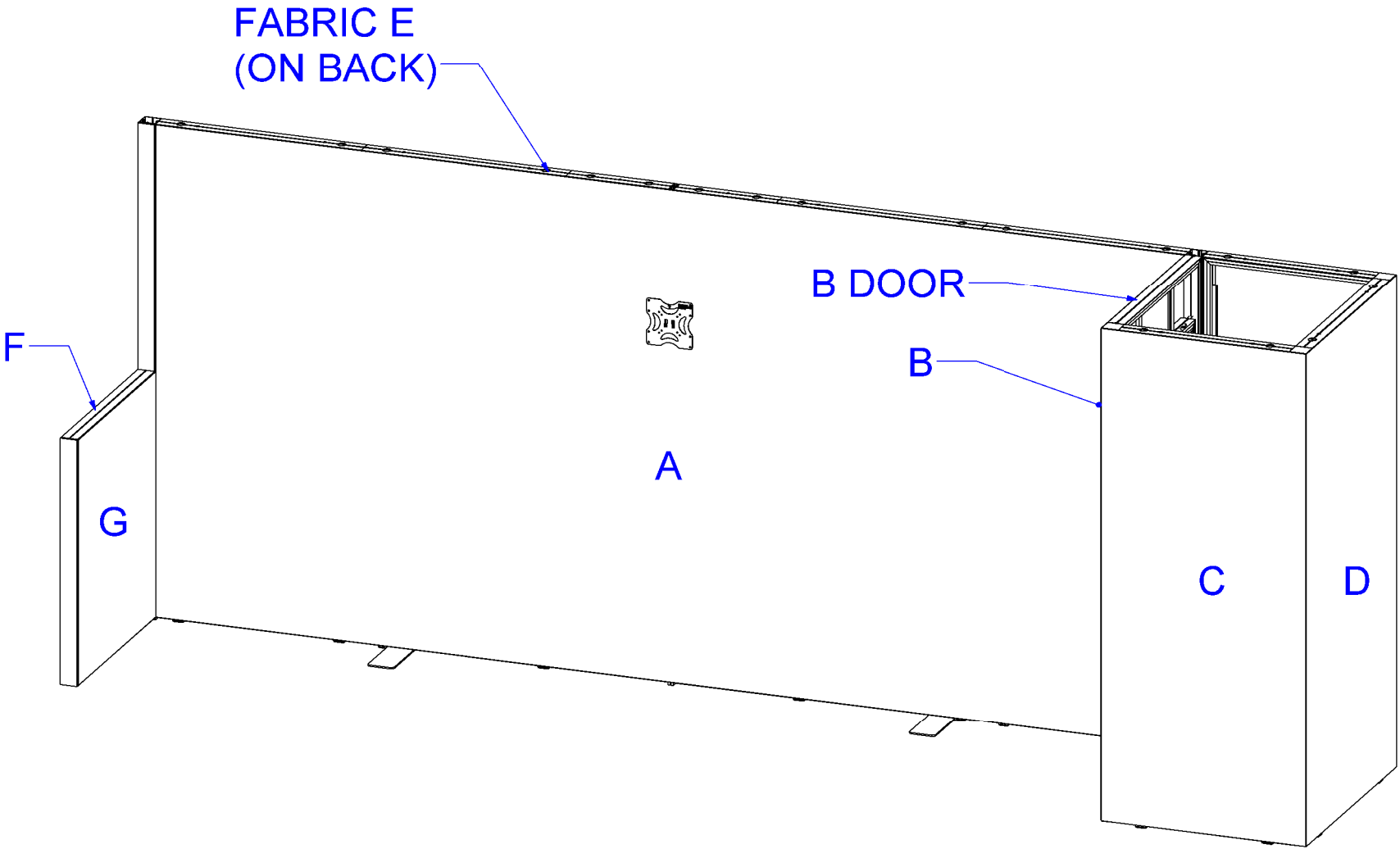
**DO NOT** start at one corner and work in one direction across the frame as this will stretch the gasket and bunch the fabric.



FABRIC HANDLING

- | Most fabrics can be folded. Loosely fold with image facing inward.
- | Follow general fabric care guidelines included with this shipment.
- | Store graphics in original shipping packaging.
- | Do not crush.

Wipe down frame. Lay down supplied plastic drop cloth. Put on supplied gloves. Carefully unpack fabric covers and lay face down on clean plastic drop cloth. Locate the fabric(s) and verify orientation. See fabric installation details to the left for best fit. If needed, hand steam to remove small wrinkles or creases.



GLOVES



CLIENT: -	PROJECT MANAGER: -	DESIGNER: -	W.O.#: -
PROJECT: EZ WALL CONFIGURATIONS	W.O.DESCRPTION: SIMPLY ENGAGING	CURRENT REVISION: O	LINE ITEM #: -